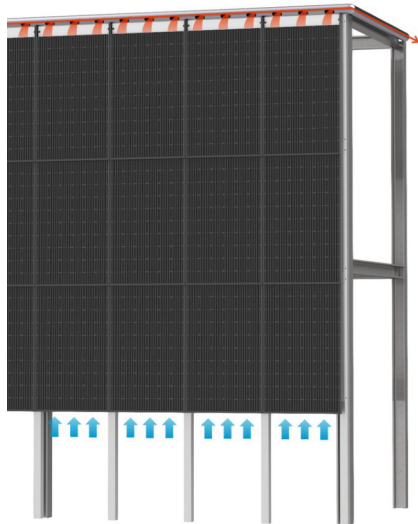


## > SOLAR FACADE ELEMENT

With the universal Solar Facade Element, it is possible to easily open entire exterior facades for photovoltaic panels. The system can be integrated directly into steel and concrete frame buildings. With its sandwich construction, it is built up like a wall element of a prefabricated house and can be equipped with PV, thermal insulation up to the interior cladding including cable ducts as required. The integrated rear ventilation of the PV panels protects the solar cells from degradation and rapid aging. The resulting waste heat can be fed into a heat pump through an extraction system, so that additional solar thermal energy is generated.



- > Universal mounting for external facades (BiPV)
- > Prefabricated wall element
- > Generation of PV and solar thermal energy
- > Cooling of the solar cells through rear ventilation
- > Easy replacement of a PV panel from the composite possible



We support you in your projects in the areas of energy technology, automotive and industry from the initial product idea through prototype construction to the start of series production or from the greenfield to the finished factory and production start. In our innovation division, we also develop highly efficient and forward-looking solutions in the field of renewable energies and electromobility. We look forward to getting in touch with you!



### paXos Consulting & Engineering GmbH & Co. KG

Karl-Benz-Str. 9  
D - 40764 Langenfeld (Rhld.)  
Telephone: +49 (0)2173 200 43 30  
E-Mail: [info@paXos.gmbh](mailto:info@paXos.gmbh)



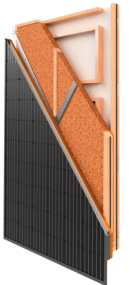
[www.paXos.gmbh](http://www.paXos.gmbh)



[www.paXos.solar](http://www.paXos.solar)

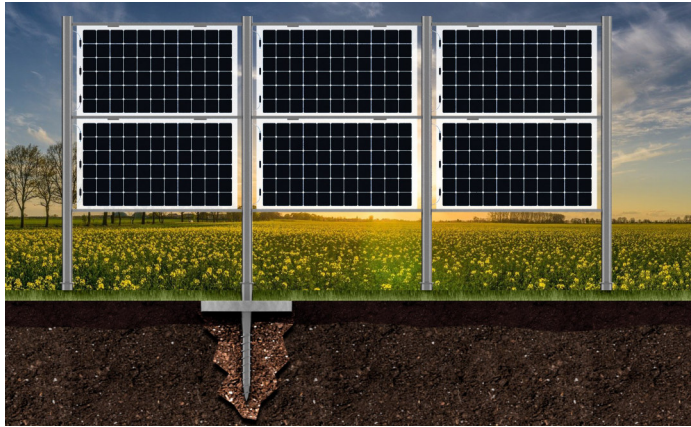


## SOLAR INNOVATIONS



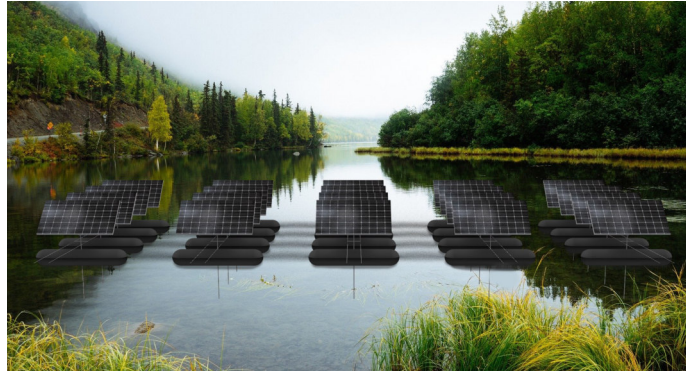
## SOLAR AGRICULTURAL ELEMENT

Through the combination of an earth screw inserted into the ground, which absorbs the tensile forces, and a rigid concrete slab just below the turf, which absorbs the bending and shear forces, a secure and sustainable mounting of PV modules can be realized with the Solar Agricultural Element from paXos. The foundation system enables cost-effective installation with proven machines, quick installation as well as immediate loading and easy dismantling. In contrast to conventional systems, it also requires significantly less material.



- › Universal foundation system especially for PV fences and ground-mounted systems
- › Secure mounting according to nature's tree root principle
- › Rapid installation and immediate loading possible
- › Easy to dismantle and reusable - no surface sealing and no pollutant entry into the soil

## SOLAR WATER ELEMENT



With the Solar Water Element, water surfaces can be optimally used for energy generation. A floating body provides the bearing of the PV modules and an anchoring in the ground prevents drifting. The entire system is connected by wire ropes and can be rotated in rows in the direction of the sky and in the direction of the azimuth. This allows the PV panels to be ideally aligned based on the course of the sun.

- › Universal system for PV panels on water
- › Reflection of light, hardly any shading and cooling by the water increase energy output
- › Floating bodies ensure flexible bearing and optimal orientation of the modules
- › 2-axis tracking system
- › Low motor power required

In the event of a storm, the modules are aligned horizontally, and in the event of hail, vertically. Overall, only low motor power is required, as the entire system floats on the water.

You can find more information about our products here:



## SOLAR TRAFFIC ROUTE ELEMENT

The Solar Traffic Route Element enables a superstructure over already sealed areas such as highways, roads, parking lots to generate PV and protect the asphalt at the same time. A steel or reinforced concrete skeleton forms the basic framework on which the brackets for the PV modules are mounted, which can be installed either overhead or laterally. All modules are rotatably mounted. This allows direct natural ventilation and, in the event of a fire, rapid smoke extraction from the facility and the formation of escape routes in the side area at each PV panel.



- › Energy retrofitting of sealed surfaces such as highways, roads, parking lots, etc.
- › Simple steel skeleton construction
- › Rotatable PV modules allow fresh air supply and rapid smoke extraction as well as escape routes in case of fire
- › Integrated rainwater drainage prevents aquaplaning